



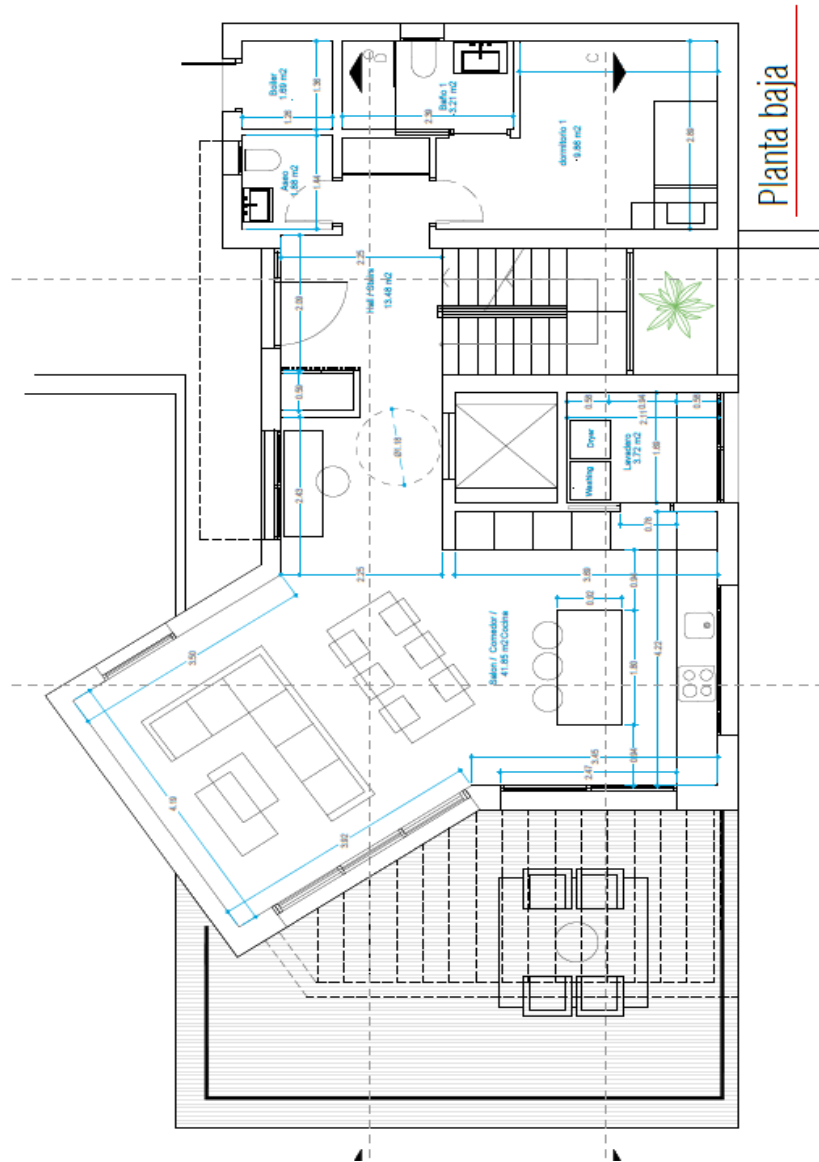
VILLA A1				
	LIVING	BUILT	TERRACE	GARDEN
TOTAL :	202.63 m2	270.60 m2	60.67 m2	103.00 m2

THE PLANS

CALAHONDA views

FLOOR PLAN

TOP FLOOR - VILLA A1 -



VILLA A1			
	LIVING	BUILT	TERRACE
Top floor:	75.69 m2	92.08 m2	34.61 m2





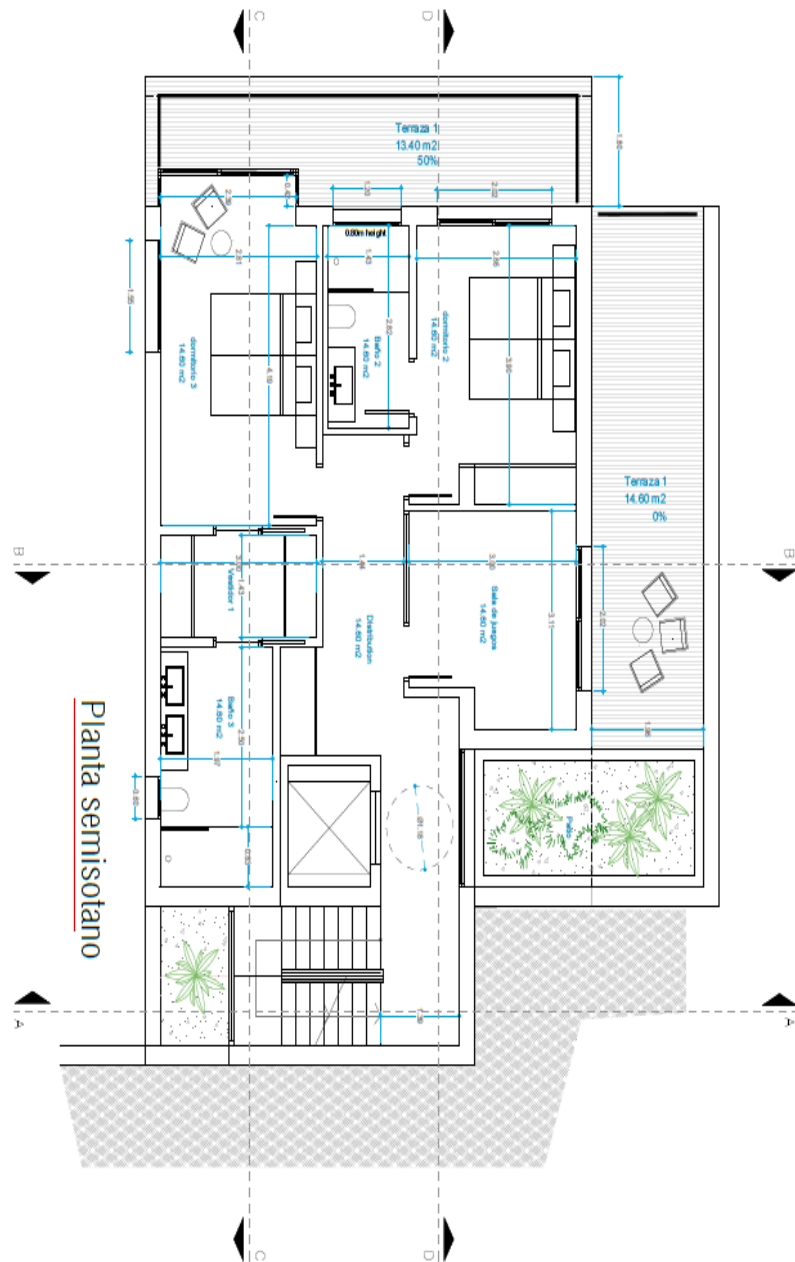
CALAHONDA
VIEWS

THE PLANS

CALAHONDA views

FLOOR PLAN

FIRST FLOOR - VILLA A1 -



VILLA A1

	LIVING	BUILT	TERRACE
First floor:	66.67 m2	96.05 m2	28.30 m2



CALAHONDA
VIEWS

THE PLANS

CALAHONDA views

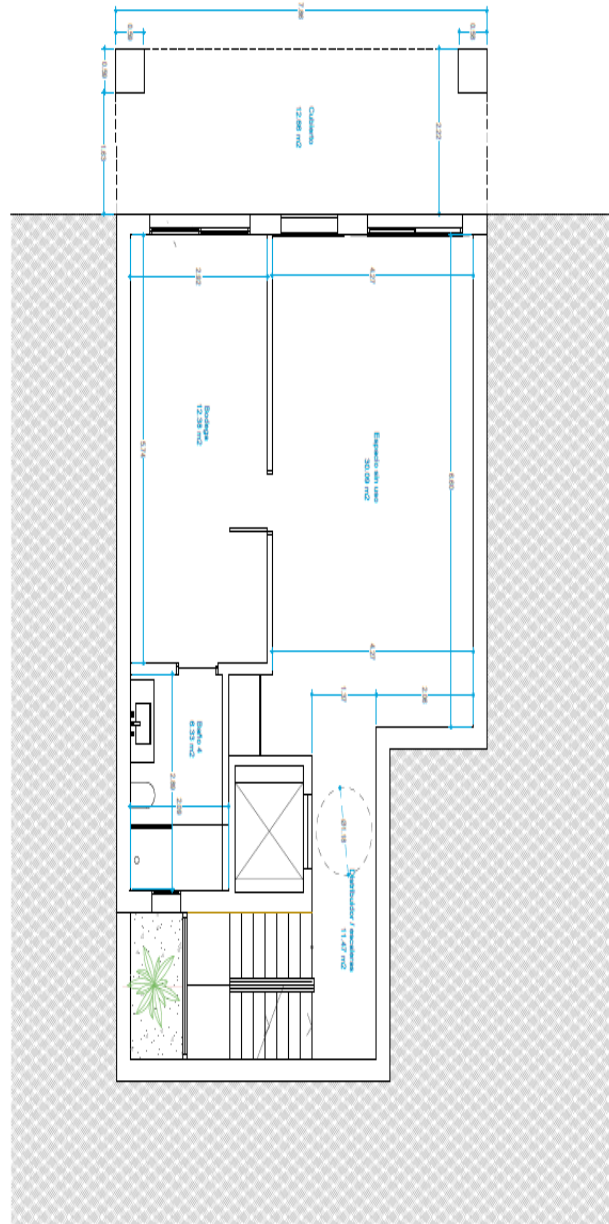
FLOOR PLAN

GROUND FLOOR

- VILLA A1 -



Sotano



VILLA A1

	LIVING	BUILT	TERRACE
Ground floor:	60.27 m2	82.47 m2	12.66